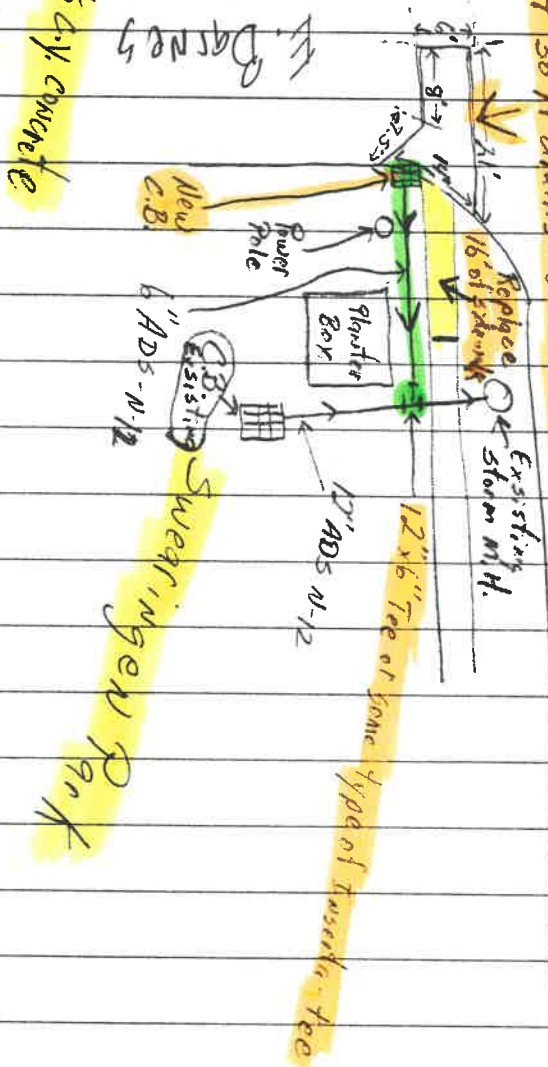


SID S. PERRY
SWEARINGEN PARK

Scrub + Remove 0' 10"
Asphalt 2" deep + Replace
it so it drains to new C.B.

S. Perry



- 1 ea. C.B. grate
- 25' of 6"-N-12 pipe
- 1 - ea. 6" Insert Tee
- 1 - ea 3'-12B C.B.
- 9' x 5' x 4" sidewalk
- 7' x 5' x 6" sidewalk
- #402 Asphalt → 2 tons

Swearingen Park